

Royal Botanic Gardens

# Kew

Arts & Humanities Research at Kew

EBHL: Meise Botanic Garden - 19 October 2022

Mark Nesbitt, Senior Research Leader, Interdisciplinary  
Research

Fiona Ainsworth, Head of Library and Archives



# Who is involved?

## Library & Archives



Fiona Ainsworth



Kiri Ross-Jones

## Interdisciplinary Research



Mark Nesbitt



Philippa Ryan

## Education



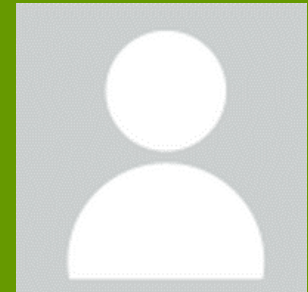
Richard  
Gianfrancesco



David Iggulden



Caroline Cornish



PhD coordinator –  
currently  
recruiting

# Arts & Humanities

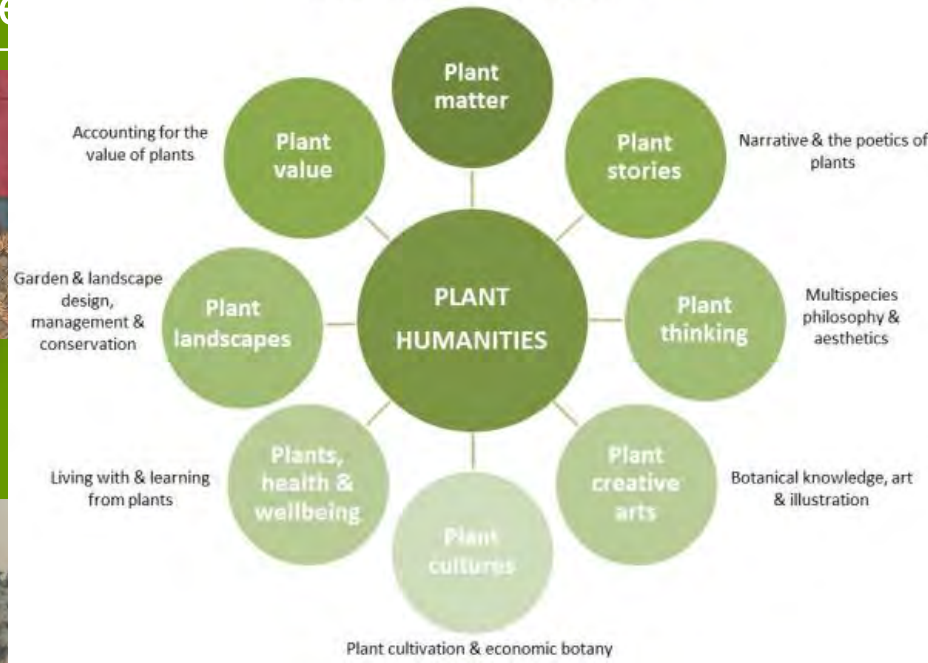


## Pacific Barkcloth 2016-2019



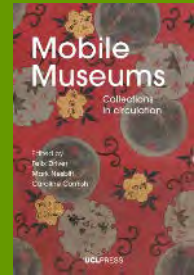
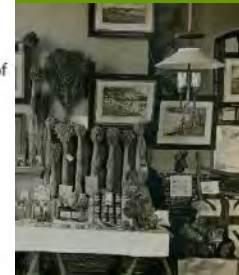
## Hidden Histories St Vincent Botanical

Biocultural collections, their past & future uses



## Plant Humanities: Where Arts, Humanities & Plants Meet Where Next? Development Programme

Final Report to AHRC  
December 2021



## Museum



## Agri-system histories





# Other research projects



Cataloguing & conservation of  
Miscellaneous Reports



Places, Plants and People  
archive network



Plants and minerals in  
Byzantine popular  
pharmacy

Reconciling Medical Knowledge  
Communities: Learning from  
the History of Indian Plant



Shiraz Bayjoo: On colonisation,  
landscapes and living  
collections



# Arts and Humanities doctoral students (some of them)



Heather Craddock



Kim Walker



Frankie Kubicki



Lindsay Sekulowicz



Harriet Gendall



Christina Hourigan



Vivi Mellegård



Isobel Akerman



Pippa Pemberton



Michelle Payne



# The future...

## Strategy

- History
- Art
- Landscape ecology

## Capacity

- Digitisation
- Diversity
- Partnerships

## A focal point

- A Centre for the Plant Humanities



### **Initiative 5.1: Interdisciplinary Research**

**Aim: To extend our reach and impact in science and public engagement through interdisciplinary research**



### **Kew Library & Archives Strategy (in draft)**

### **Priority 3: Interdisciplinarity and Inclusivity**

**Aim: to expand the impact and use of our collections and encourage interdisciplinary research**



Thank you

Fiona Ainsworth  
 Library and Archives  
 Royal Botanic Gardens, Kew  
[f.ainsworth@kew.org](mailto:f.ainsworth@kew.org)

'*Papaver laciniatum*'  
<https://www.biodiversitylibrary.org/page/31505544>



Sebastian Schedel (1570-1628): Calendarium (1610)  
 (codex of original illustrations for *Hortus Eystettensis*)  
*Papaver* sp.